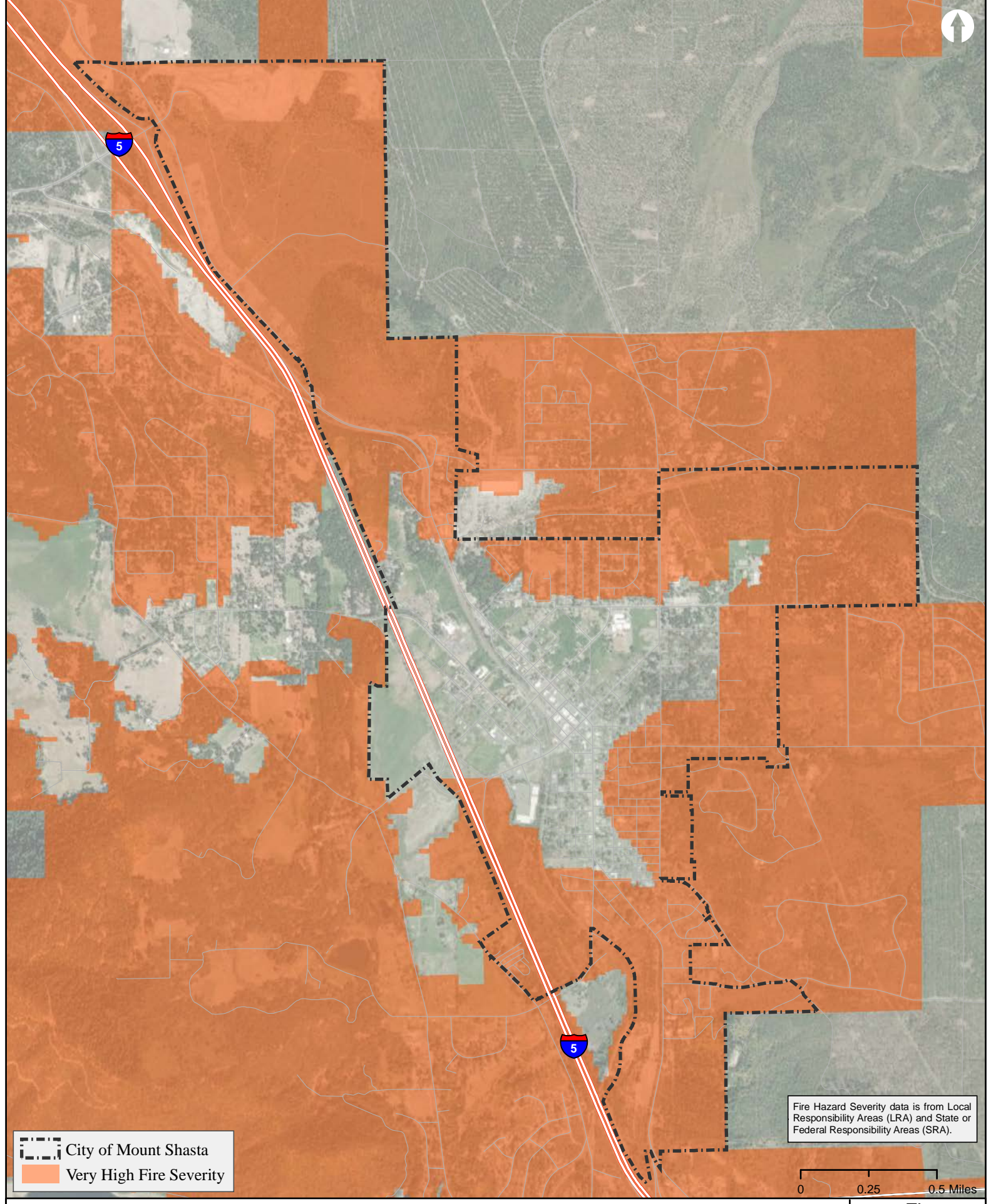


APPENDIX B FIGURE SET

Figure Number	Figure Title
Figure B-1	Fire Hazard Severity Zones
Figure B-2	National Wetland Inventory
Figure B-3	RHNA Site
Figure B-4	RHNA Site and Buffers
Figure B-5	Suitable Emergency Shelter Parcels
Figure B-6	Lands Available and Suitable for Residential Development



 City of Mount Shasta
 Very High Fire Severity

Fire Hazard Severity data is from Local Responsibility Areas (LRA) and State or Federal Responsibility Areas (SRA).


0 0.25 0.5 Miles

City of Mount Shasta Fire Hazard Severity Zones

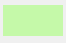
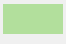
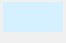
Figure
B-1

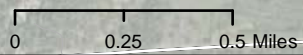
Map Date: 9/21/2022



 City of Mount Shasta

Wetland Type

-  Freshwater Emergent Wetland
-  Freshwater Forested/Shrub Wetland
-  Freshwater Pond



City of Mount Shasta National Wetland Inventory

Figure
B-2

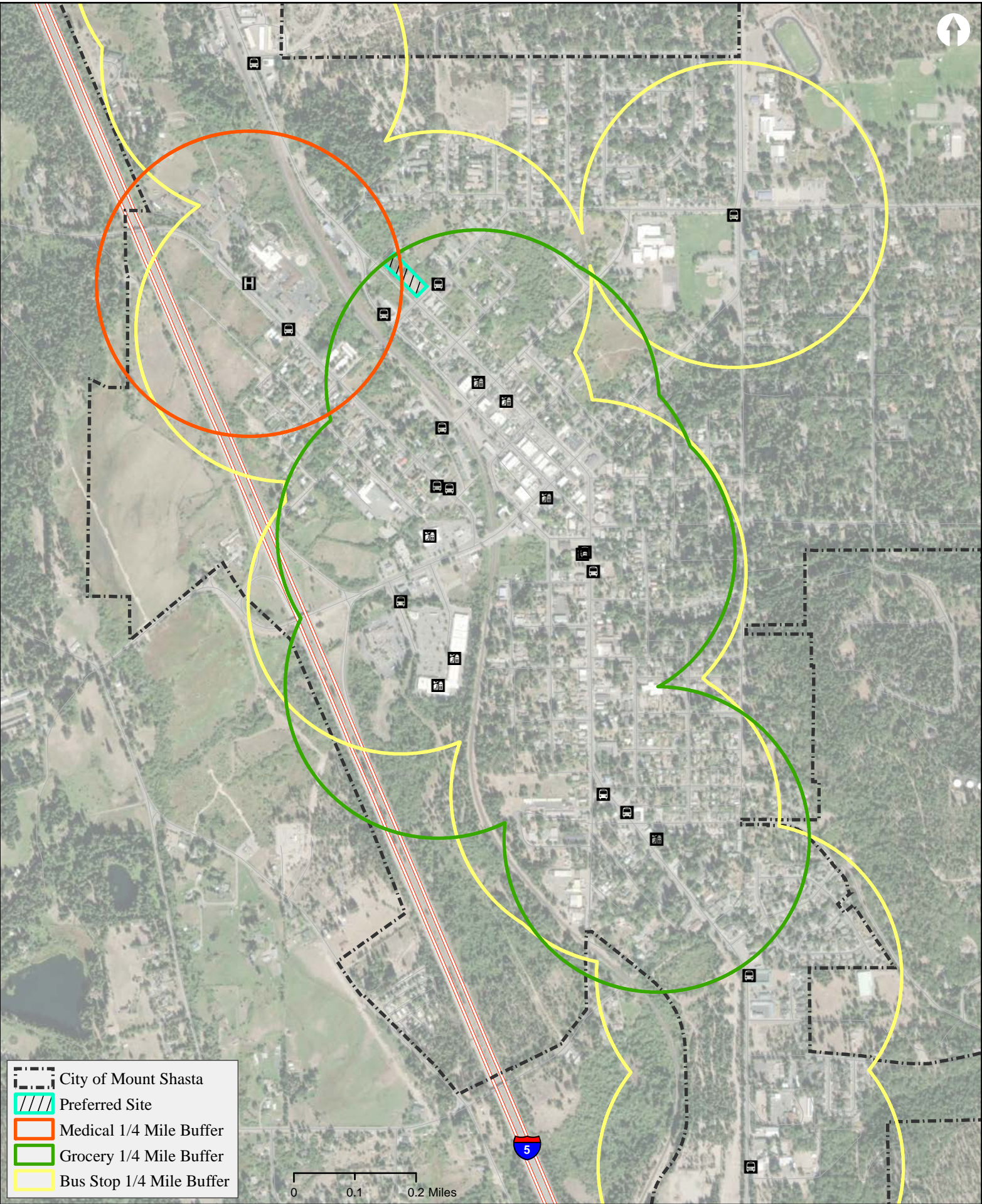
Map Date: 12/2/2022



City of Mount Shasta RHNA Site

Figure
B-3

Map Date: 5/26/2023

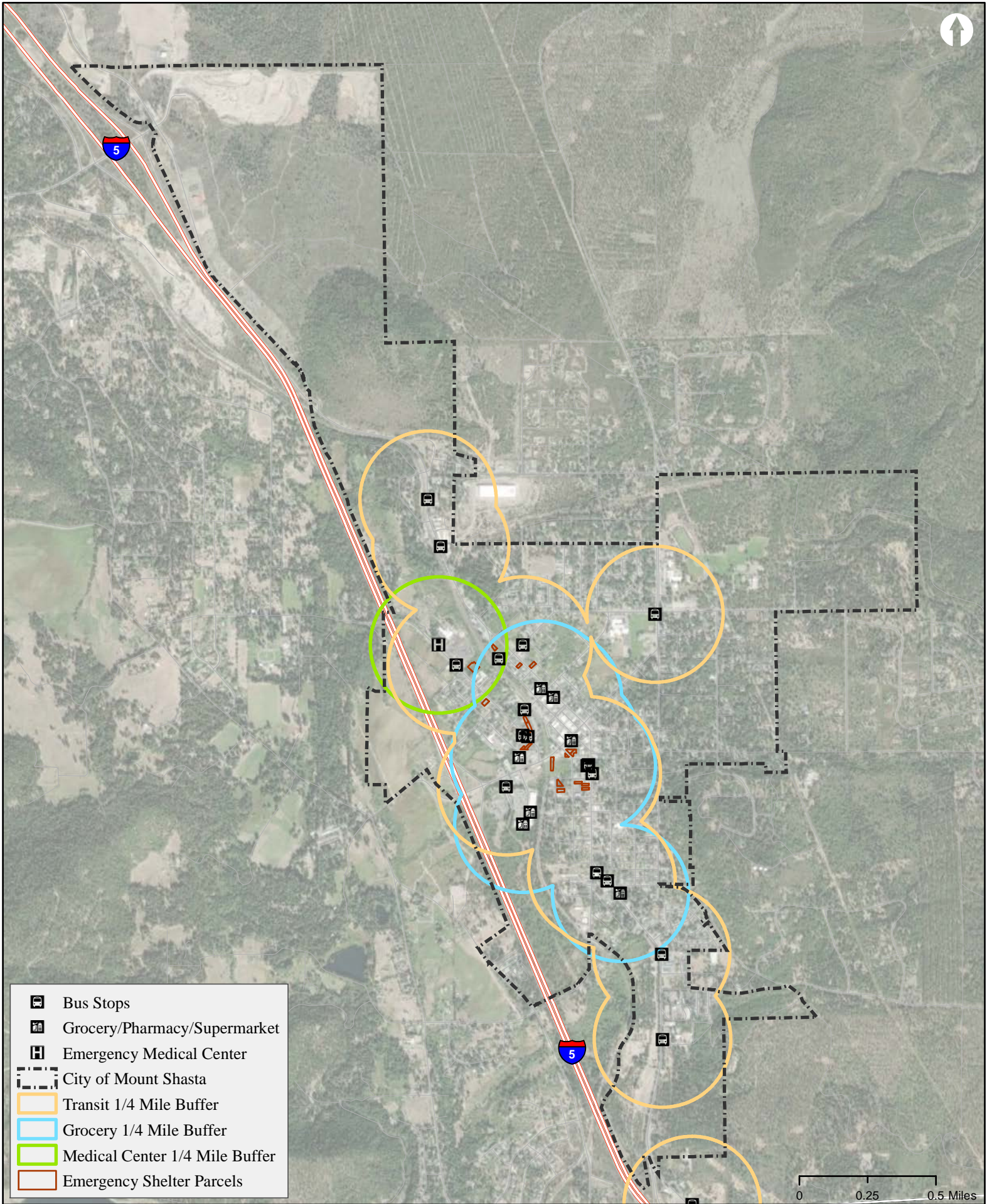


- City of Mount Shasta
- Preferred Site
- Medical 1/4 Mile Buffer
- Grocery 1/4 Mile Buffer
- Bus Stop 1/4 Mile Buffer

0 0.1 0.2 Miles

City of Mount Shasta RHNA Site and Buffers

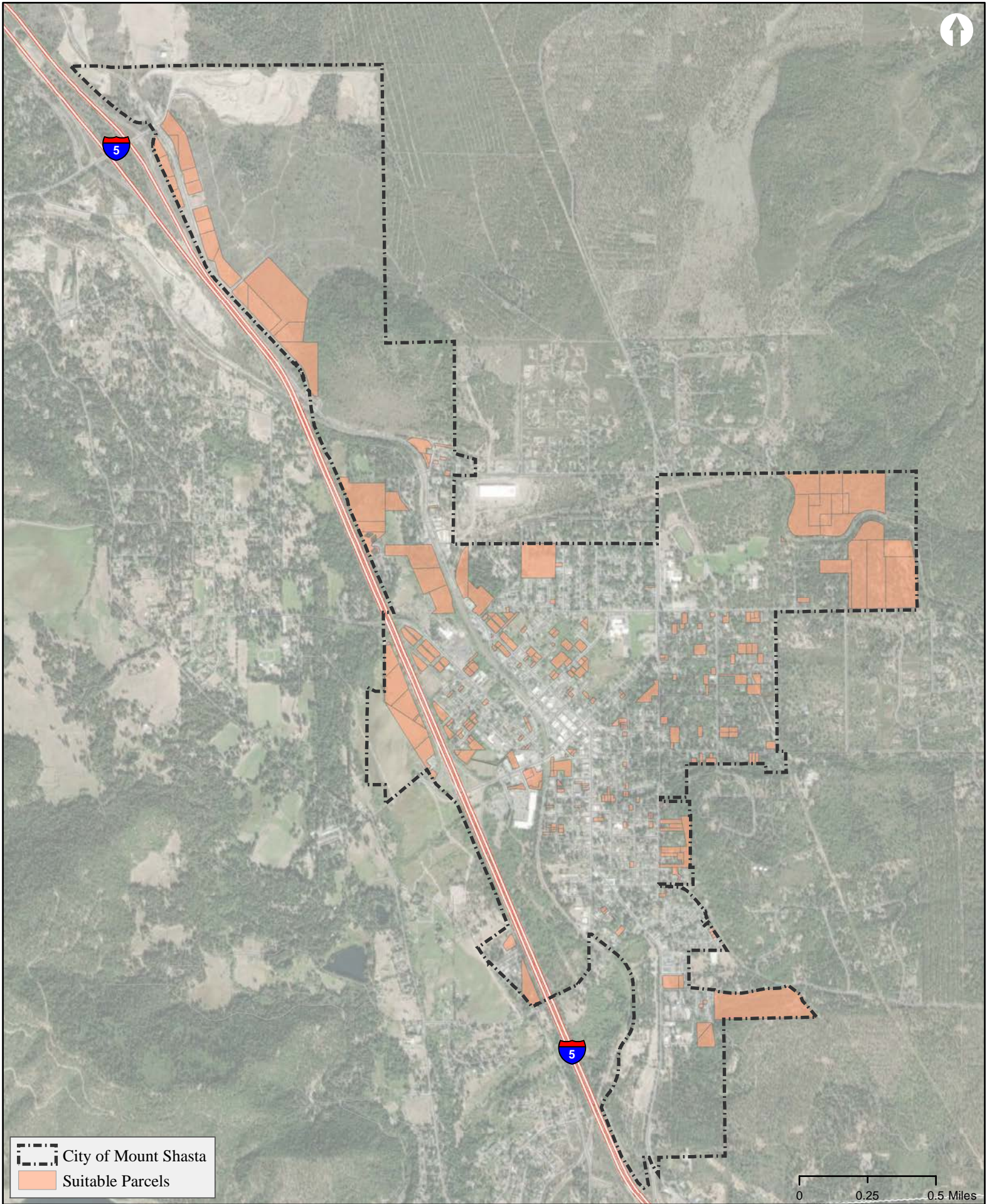
Figure
B-4



City of Mount Shasta Suitable Emergency Shelter Parcels

Figure
B-5

Map Date: 3/10/2023



--- City of Mount Shasta
■ Suitable Parcels

0 0.25 0.5 Miles

City of Mount Shasta - Lands Available and Suitable for Residential Development

Figure B-6

Map Date: 3/20/2023